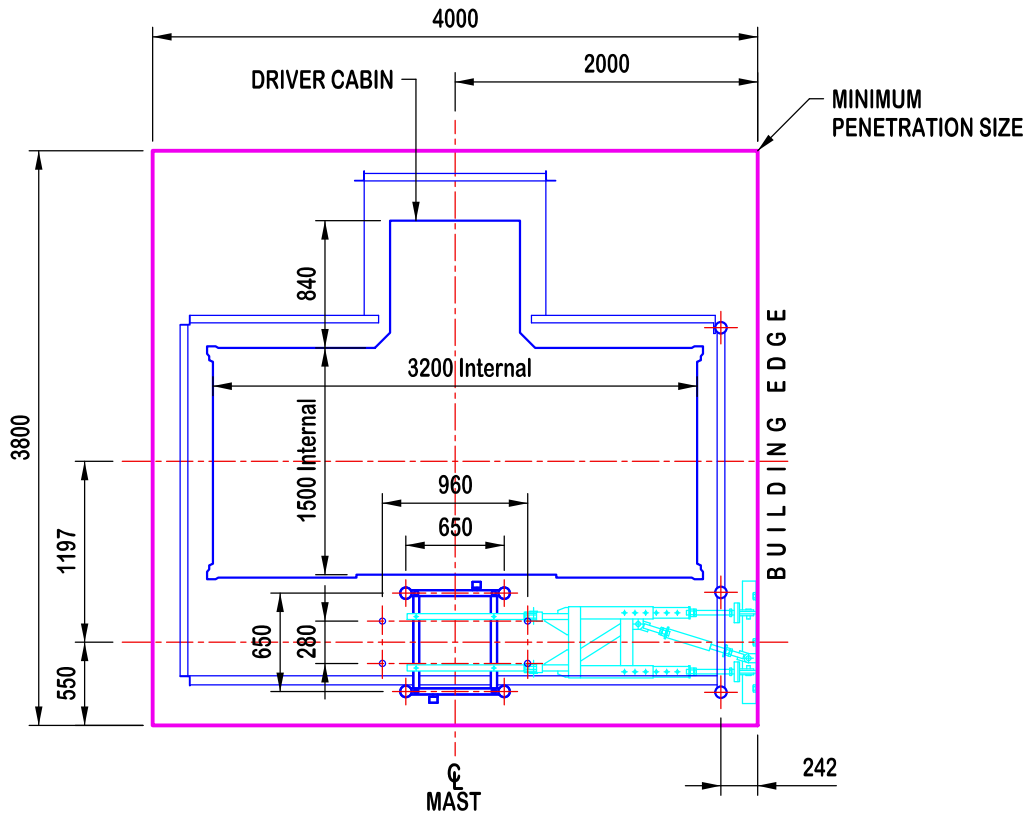




Zoomlion SC200 Man and Materials Hoist

PLAN LAYOUT



TECHNICAL DATA

CAPACITY

Payload Capacity	2000kg
Erection Load	1000kg
Speed	36m/min
Maximum Lifting Height	
Single Car	450 metres
Twin Car	450 metres

CAR DIMENSIONS

Width	1.5m
Length	3.2m
Height	2.5m
Door Opening (w x h)	1.48m x 2.0m

ELECTRICAL DATA

Power supply	415V/50Hz 3 Phase with Neutral
Power supply fuses	40A (1 Car)
Rated power cont. duty	11kW
Starting current	Soft start with inverter motor control
Power consumption	29kVa

WEIGHTS

Cage (incl. drive system)	2000kg
Mast Section (4.5mm wall)	145kg

MAST SECTION DIMENSIONS

Centre to Centre	650mm x 650mm
Length	1508mm