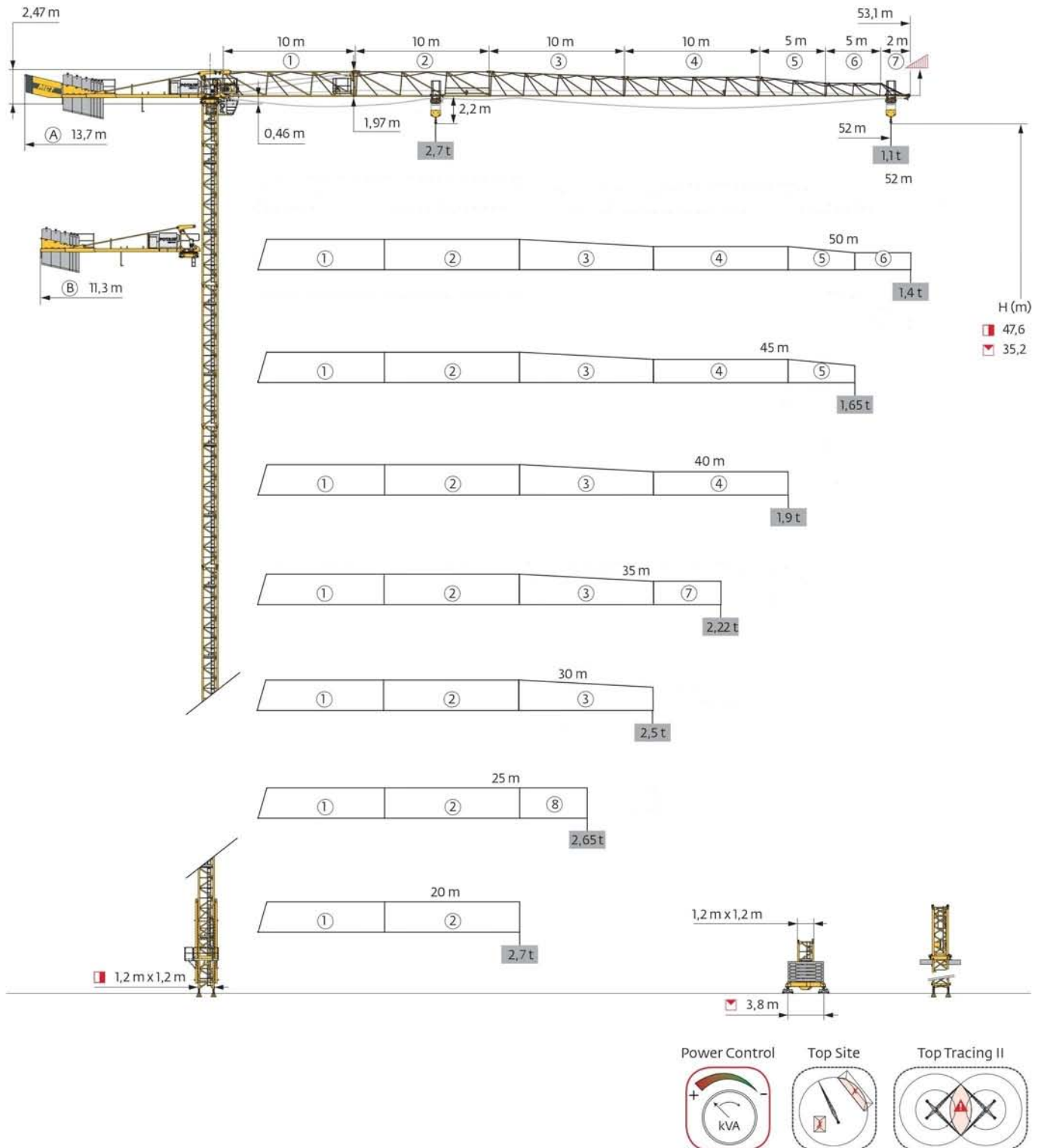
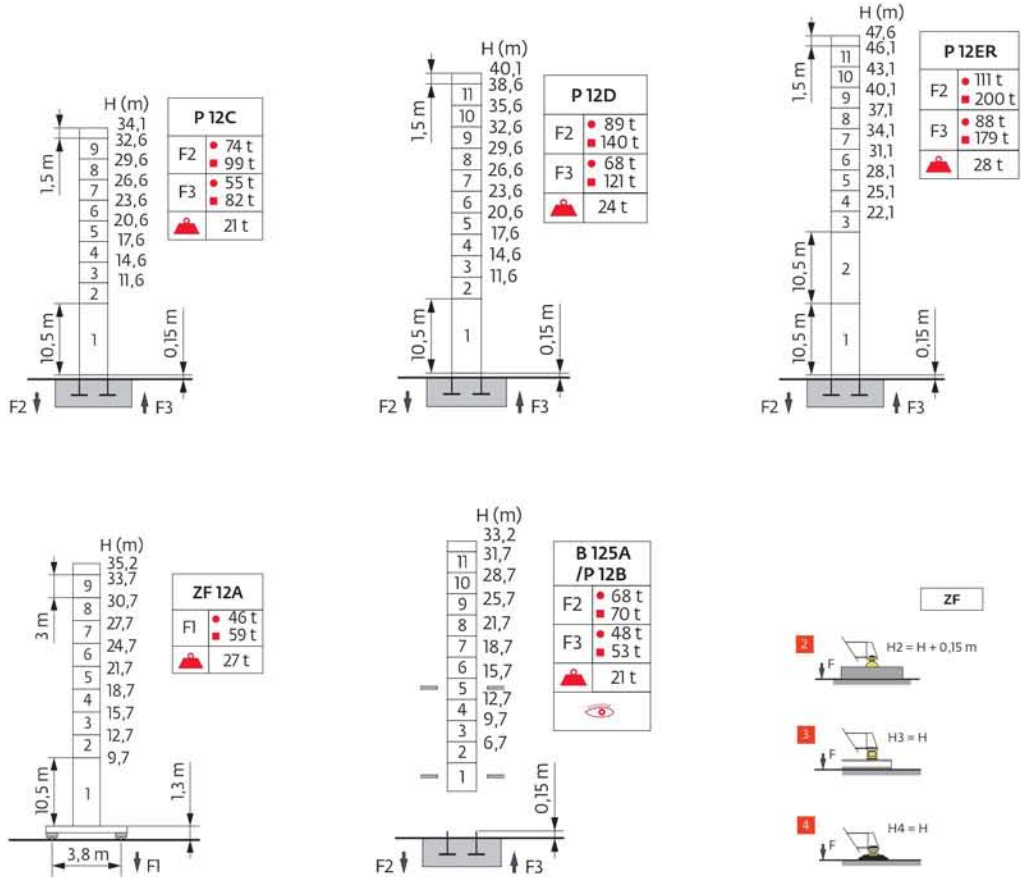


MCT 85 F5

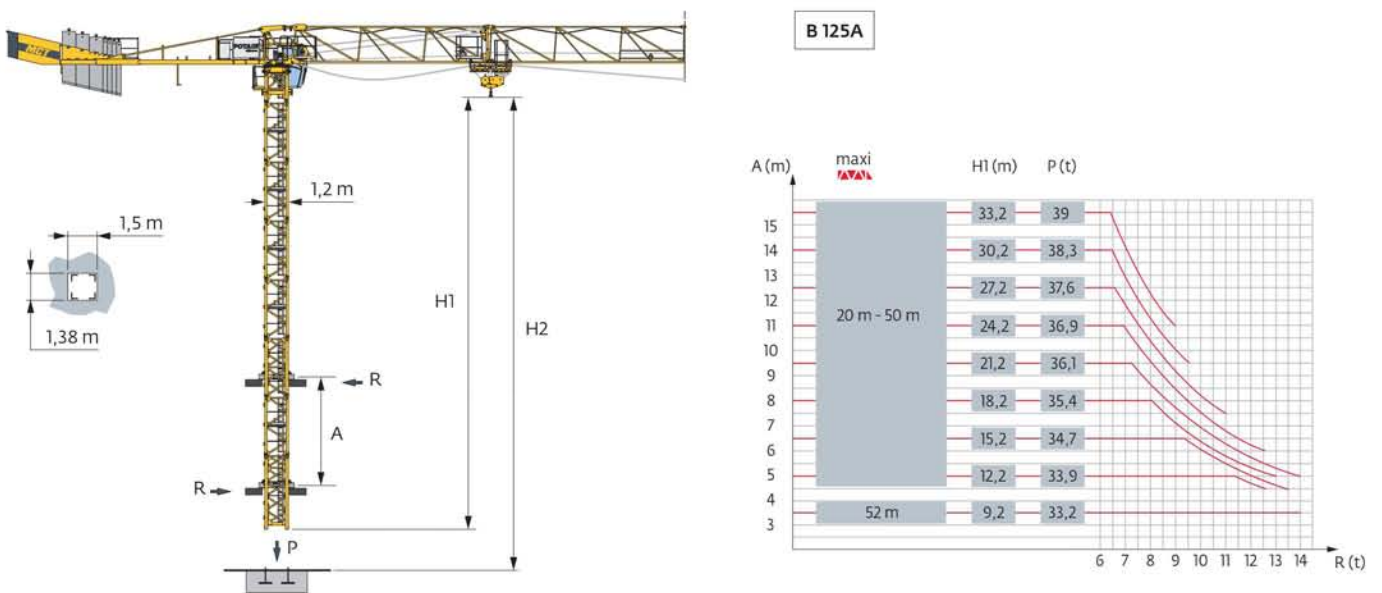


Mât - Réactions / Mast - Reaktionskräfte / Mast - Reactions / Mástil - Reacciones / Torre - Reazioni
 Tramo - Reações / Реакция опор мачты

1,2 m
 20 m → 52 m



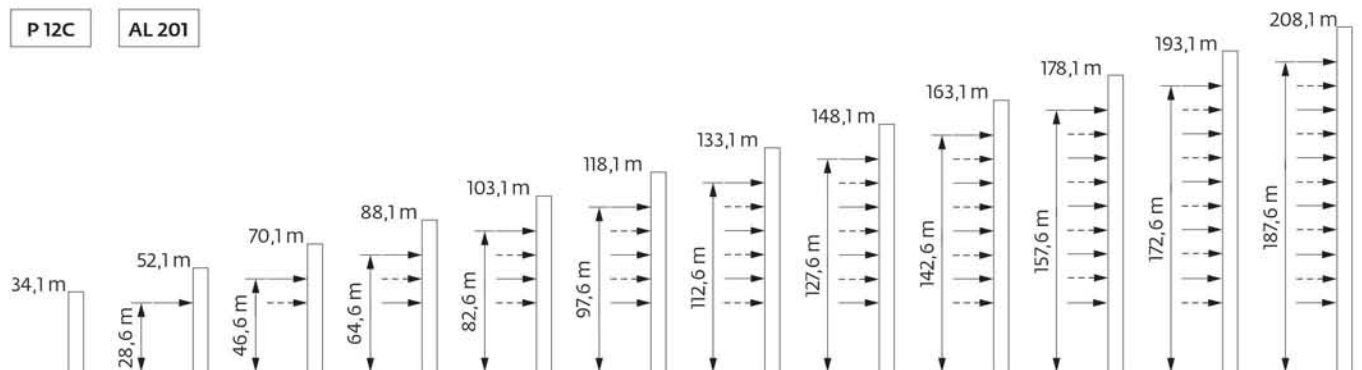
Télescopage sur dalle / Kletterkrane im Gebäude / Climbing crane / Telescopage gruas trepadoras / Gru in cavedio
 Telescopagem sobre lages / Кран, ползущий внутри здания



Anchages / Verankerungen / Anchorages / Anclajes / Ancoraggi
 Ancoragem / Анкера

P 12C

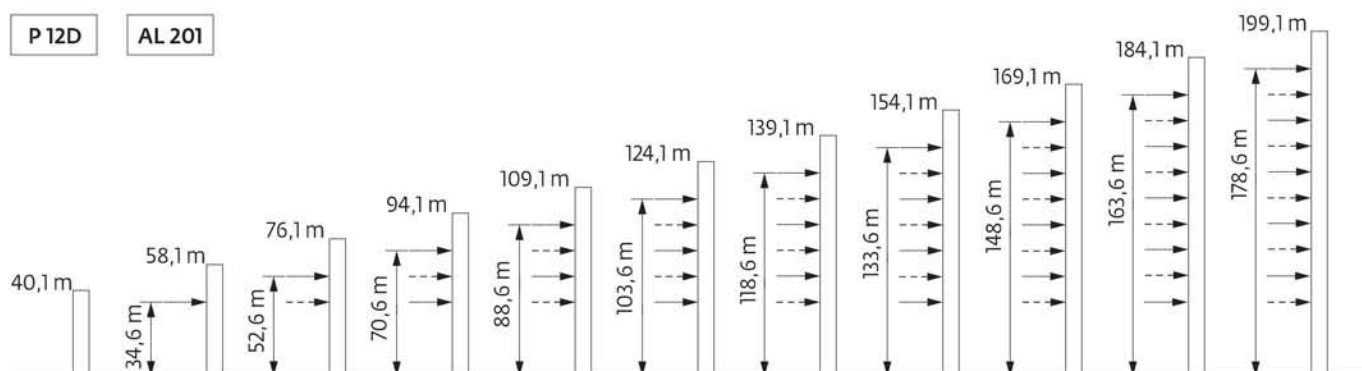
AL 201



H > 208,1 m

P 12D

AL 201






H > 199,1 m

Courbes de charges / Lastkurven / Load curves / Curvas de cargas / Curve di carico
 Curvas de carga / Кривые нагрузок









| | | | | | | | | | | | | | | | | | | | |
|------|-----|---|-----|-----|-----|-----|------|------|------|------|------|-----|------|------|------|------|------|-----|---|
| 52 m | 2,7 | ▶ | 15 | 17 | 20 | 22 | 25 | 27 | 30 | 32 | 35 | 37 | 40 | 42 | 45 | 47 | 50 | 52 | m |
| ▲▲▲ | | | 2,7 | 2,7 | 2,7 | 2,7 | 2,5 | 2,36 | 2,15 | 2 | 1,8 | 1,7 | 1,55 | 1,45 | 1,3 | 1,25 | 1,15 | 1,1 | t |
| 50 m | 2,7 | ▶ | 15 | 17 | 20 | 22 | 25 | 27 | 30 | 32 | 35 | 37 | 40 | 42 | 45 | 47 | 50 | m | |
| ▲▲▲ | | | 2,7 | 2,7 | 2,7 | 2,7 | 2,65 | 2,59 | 2,5 | 2,4 | 2,15 | 2 | 1,85 | 1,75 | 1,6 | 1,5 | 1,4 | t | |
| 45 m | 2,7 | ▶ | 15 | 17 | 20 | 22 | 25 | 27 | 30 | 32 | 35 | 37 | 40 | 42 | 45 | m | | | |
| ▲▲▲ | | | 2,7 | 2,7 | 2,7 | 2,7 | 2,65 | 2,59 | 2,5 | 2,45 | 2,2 | 2,1 | 1,9 | 1,8 | 1,65 | t | | | |
| 40 m | 2,7 | ▶ | 15 | 17 | 20 | 22 | 25 | 27 | 30 | 32 | 35 | 37 | 40 | m | | | | | |
| ▲▲▲ | | | 2,7 | 2,7 | 2,7 | 2,7 | 2,65 | 2,59 | 2,5 | 2,45 | 2,2 | 2,1 | 1,9 | t | | | | | |
| 35 m | 2,7 | ▶ | 15 | 17 | 20 | 22 | 25 | 27 | 30 | 32 | 35 | m | | | | | | | |
| ▲▲▲ | | | 2,7 | 2,7 | 2,7 | 2,7 | 2,65 | 2,59 | 2,5 | 2,45 | 2,22 | t | | | | | | | |
| 30 m | 2,7 | ▶ | 15 | 17 | 20 | 22 | 25 | 27 | 30 | m | | | | | | | | | |
| ▲▲▲ | | | 2,7 | 2,7 | 2,7 | 2,7 | 2,65 | 2,59 | 2,5 | t | | | | | | | | | |
| 25 m | 2,7 | ▶ | 15 | 17 | 20 | 22 | 25 | m | | | | | | | | | | | |
| ▲▲▲ | | | 2,7 | 2,7 | 2,7 | 2,7 | 2,65 | t | | | | | | | | | | | |
| 20 m | 2,7 | ▶ | 15 | 17 | 20 | m | | | | | | | | | | | | | |
| ▲▲▲ | | | 2,7 | 2,7 | 2,7 | t | | | | | | | | | | | | | |

Lest de base / Grundballast / Base ballast / Lastre de base / Zavorra di base
 Lastro da base / Базовый Балласт

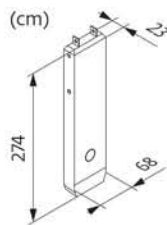
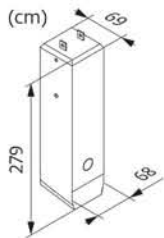
| | | | | | | | | | | | | | | | | | | | |
|--|---|---|------|------|------|------|------|------|------|------|------|------|------|------|------|------|------|------|------|
|  1,2 m | ZF 12 A | H (m) | 35,2 | 33,7 | 32,2 | 30,7 | 29,2 | 27,7 | 26,2 | 24,7 | 23,2 | 21,7 | 20,2 | 18,7 | 17,2 | 15,7 | 14,2 | 12,7 | 11,2 |
| |  |  (t) | 65 | 50 | 45 | 35 | 30 | 30 | 30 | 30 | 30 | 30 | 30 | 30 | 30 | 30 | 30 | 30 | 30 |

Poids de flèche & lest de contre-flèche / Auslegergewicht & Gegenauslegerballast / Jib weight & counter-jib ballast / Peso de flecha y lastre de contra-flecha / Peso del braccio & zavorra di contro-braccio / Peso da lança & lastro da contra lança
 Вес стрелы и балласт контр-стрелы

|  |  | | 40 LVF / 25 PC  | | |
|---|---|---|--|---------|--|
| |  |  | 3000 kg | 1000 kg |  (kg) |
| 52 m | 5755 | 5935 | 3 | 4 | 13000 |
| 50 m | 5560 | 5740 | 3 | 4 | 13000 |
| 45 m | 5275 | 5455 | 3 | 3 | 12000 |
| 40 m | 4985 | 5165 | 3 | 2 | 11000 |
| 30 m | 4660 | 4840 | 3 | 0 | 9000 |
| 20 m | 4260 | 4440 | 2 | 1 | 7000 |

CBP - 3000 kg

CBQ - 1000 kg



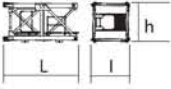
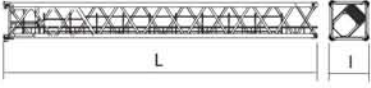
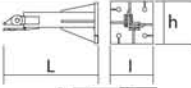
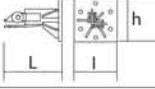
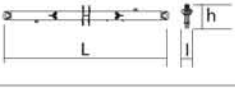
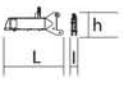
Encombremet et poids / Abmessungen und Gewicht / Dimensions and weight / Dimensiones y peso / Ingombro e peso
dimensões e pesos / габаритные размеры и вес

Partie tournante / Drehender Kranteil / Slewing crane part / Parte giratoria

Parte rotante / Parte rotativa / Поворотная часть : 52 m - 25 LVF



| Partie tournante / Drehender Kranteil / Slewing crane part Parte giratoria / Parte rotante / Parte rotativa Поворотная часть | | L (m) | I (m) | h (m) | kg (+/- 5%) |
|---|--|------------------------------|--------------------------|-------------------------|--------------------------|
| Contre-flèche / Gegenausleger Counter-jib / Contra-flecha Controbraccio / Contra-lança Контр-стрела | | 11,9 11,9 | 1,76 1,76 | 2,47 2,47 | 4380 4250 |
| Cabine / Kabine Cab / Cabina Cabina / Cabina Кабина | | 2,06 | 2,15 | 2,62 | 390 |
| Elément de flèche / Auslegerelement Jib section / Elemento de flecha Elemento di braccio / Elemento de lança Секция стрелы | | 10,62 10,62 | 1,82 1,82 | 2,2 2,2 | 3244 2984 |
| Elément de flèche / Auslegerelement Jib section / Elemento de flecha Elemento di braccio / Elemento de lança Секция стрелы | | 10,21 10,17 10,14 | 0,8 0,8 0,8 | 1,95 1,91 1,48 | 1140 742 566 |
| Elément de flèche / Auslegerelement Jib section / Elemento de flecha Elemento di braccio / Elemento de lança Секция стрелы | | 5,15 5,14 5,13 5,08 | 0,8 0,8 0,8 0,8 | 1,9 1,5 1,48 1 | 325 290 285 175 |
| Elément de flèche / Auslegerelement Jib section / Elemento de flecha Elemento di braccio / Elemento de lança Секция стрелы | | 5,17 5,11 | 0,8 0,8 | 1,91 1,47 | 400 195 |
| Elément de flèche / Auslegerelement Jib section / Elemento de flecha Elemento di braccio / Elemento de lança Секция стрелы | | 2,05 | 0,8 | 1 | 60 |
| Chariot / Laufkatze Trolley / Carrello Carro / Carro-distribuidor Тележка | | 1,1 | 1 | 0, 2 | 130 |
| Moufle / Hubflasche Pulley block / Aparejo Bozzello / Cadernal Полиспаст | | 0,74 | 0,2 | 1,13 | 135 |
| Equipement de télescopage / Teleskopierausrüstung / Telescoping equipment Equipo de telescopaje / Equipaggiamento di telescopaggio / Equipamento de telescopagem Оборудование для телескопирования | | | | | |
| Cage de télescopage / Teleskopwagen Telescopic cage / Jaula de telescopaje Gabbia di telescopaggio / Gaiola de telescopagem для телескопирования крана | | 6,3 | 3,61 | 3,63 | 1980 |

| Mâtire / Mastwerk / Masts Mástil / Torre / Coluna Мачты | | | | | | |
|--|---|---|----------------------|----------------------|----------------------|----------------------|
| S 24D1 S 24D2 SR 24D1 |  | \square 1,2 m \square 1,2 m \square 1,2 m | 3,2 3,2 3,2 | 1,29 1,29 1,29 | 1,26 1,26 1,26 | 750 780 720 |
| SR 24 BS S 26 BS SR 28 ER |  | \square 1,2 m \square 1,2 m \square 1,2 m | 10,7 10,7 10,7 | 1,3 1,3 1,3 | 1,28 1,27 1,3 | 2250 3070 4060 |
| Bases / Kranbasen / Crane bases Bases / Basi / Bases фундамент под кран | | | | | | |
| Pieds de scellement / VerankerungsfüÙe Fixing angles / Pie de empotramiento Montante da anngare / Angulos fixadores анкера |  | P12C | 1,1 | 0,5 | 0,5 | 170 |
| |  | R 12C | 0,68 | 0,5 | 0,5 | 145 |
| Bras de croix / Fundamentkruzträger Cross girder / Brazo en cruz Braccio croce / Braço da cruz Поперечная балка |  | ZF12A | 5,64 | 0,67 | 1,4 | 1540 |
| 1/2 Bras de croix / 1/2 Fundamentkruzträger 1/2 Cross girder / 1/2 Brazo en cruz 1/2 Braccio croce / 1/2 Braço da cruz 1/2 Поперечная балка |  | ZF12A | 2,98 2,98 | 0,4 0,43 | 1,41 1,41 | 895 925 |

Mécanismes / Triebwerke / Mechanisms / Mecanismos / Meccanismi
Mecanismos / Механизмы

| 400 V - 50 Hz | | | | | | | | | | | ch - PS hp | kW | |
|---------------|------------|------------------------|--------------|------|-----|--|--|--|--|-------|---------------|----|-------|
| | 25 PC 13 | m/min | 9 | 35,5 | 71 | | | | | | | | 360 m |
| | | t | 2,7 | 2,7 | 1,3 | | | | | 25 | 18,5 | | |
| | 4 D3 V3 | m/min | 15 → 30 → 58 | | | | | | | 4 | 3 | | |
| | RCV 60 | tr/min U/min rpm | 0 → 0,8 | | | | | | | 8 | 5,8 | | |
| | TVD 324 CI | m/min | 12,5 - 25 | | | | | | | 2 x 7 | 2 x 5,2 | | |

| 400 V - 50 Hz | | | | | | | | | | | hp | kW | |
|---------------|--------------------|------------------------|-----------|-----|-----|-----|------|--|--|-------|---------|----|-------|
| | 40 LVF 13 (GH) | m/min | 5 | 13 | 41 | 61 | 81,5 | | | | | | 425 m |
| | | t | 2,7 | 2,7 | 2,7 | 1,9 | 1,25 | | | 40 | 30 | | |
| | 4 DVF 3 | m/min | 0 → 63 | | | | | | | 5 | 3,7 | | |
| | RVF 151 Optima+ | tr/min U/min rpm | 0 → 0,8 | | | | | | | 5,5 | 4 | | |
| | TVD 324 CI | m/min | 12,5 - 25 | | | | | | | 2 x 7 | 2 x 5,2 | | |

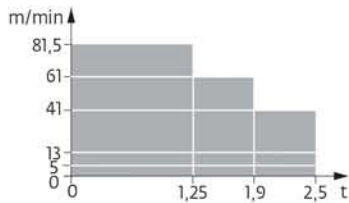
| | | | |
|--|-------------------------|--|-------------------------------------|
| | IEC 60204-32 | | kVA |
| | 400 V (+10% -10%) 50 Hz | | 40 LVF : 40 kVA ☉ 25 PC : 28 kVA |

| 480 V - 60 Hz | | | | | | | | | | | ch - PS hp | kW | |
|---------------|------------|------------------------|--------------|------|-----|--|--|--|--|---------|---------------|----|-------|
| | 25 PC 13 | m/min | 10,5 | 42,5 | 85 | | | | | | | | 360 m |
| | | t | 2,7 | 2,7 | 1,3 | | | | | 30 | 22,1 | | |
| | 4 D3 V3 | m/min | 18 → 30 → 70 | | | | | | | 4,8 | 3,6 | | |
| | RCV 60 | tr/min U/min rpm | 0 → 0,96 | | | | | | | 9,6 | 7 | | |
| | TVD 324 CI | m/min | 15 → 30 | | | | | | | 2 x 8,4 | 2 x 6,2 | | |

| 480 V - 60 Hz | | | | | | | | | | | hp | kW | |
|---------------|--------------------|------------------------|---------|-----|-----|-----|------|--|--|---------|---------|----|-------|
| | 40 LVF 13 (GH) | m/min | 5 | 13 | 41 | 61 | 81,5 | | | | | | 425 m |
| | | t | 2,7 | 2,7 | 2,7 | 1,9 | 1,25 | | | 40 | 30 | | |
| | 4 DVF 3 | m/min | 0 → 63 | | | | | | | 5 | 3,7 | | |
| | RVF 151 Optima+ | tr/min U/min rpm | 0 → 0,8 | | | | | | | 5,5 | 4 | | |
| | TVD 324 CI | m/min | 15 → 30 | | | | | | | 2 x 8,4 | 2 x 6,2 | | |

| | | | |
|--|------------------------|--|-------------------------------------|
| | IEC 60204-32 | | kVA |
| | 480 V (+6% -10%) 60 Hz | | 40 LVF : 52 kVA ☉ 25 PC : 36 kVA |

40 LVF 13 GH



| | FR | DE | EN | ES | IT | PT | RU |
|--|--|--|---|--|---|--|---|
| | Appel de flèche | Auslegerüberhöhung | Jib elevation | Elevación de la flecha | Inclinazione braccio | Desvio da lança | подъем стрелы |
| | Équipements standards | Standardausrüstungen | Standard equipment | Equipamiento de serie | Equipaggiamento standard | Equipamento de série | Стандартное оборудование |
| | Équipements optionnels | Sonderausrüstungen | Options | Equipamiento opcional | Equipaggiamento in opzione | Equipamento opcional | Дополнительное оборудование (опция) |
| | Réactions en service | Reaktionskräfte in Betrieb | Reactions in service | Reacciones en servicio | Reazioni in servizio | Reações em serviço | Реакция при работе |
| | Réactions hors service | Reaktionskräfte außer Betrieb | Reactions out of service | Reacciones fuera de servicio | Reazioni fuori servizio | Reações fora de serviço | Реакция в покое |
| | Hauteur sans cabine | Höhe ohne Kabine | Height without cab | Altura sin cabina | Altezza senza cabina | Altura sem cabina | Высота без кабины |
| | Poids à vide sans lest avec flèche et hauteur maximum | Gewicht ohne Last, ohne Ballast, mit Ausleger und max. Höhe | Weight without load, without ballast, with jib and max. height | Peso en vacío sin lastre, con flecha y altura máxima | Peso a vuoto, senza zavorra, con braccio e altezza massimi. | Peso em vazio sem lastro com lança e altura máxima. | Вес пустого, без балласта, со стрелой, максимальной высоты. |
| | Poids total du lest | Ballast-Gesamtgewicht | Total ballast weight | Peso total del lastre | Peso totale della zavorra | Peso total do lastro | Общий вес балласта |
| | Distance entre cadres | Abstand zwischen den Rahmen | Distance between collars | Distancia entra marcos | Distanza fra i telai | Distância entre quadros | Расстояние между рамками крепления |
| | Poids de la grue (en service) | Krangelgewicht (in Betrieb) | Crane weight (in service) | Peso de la grúa (en servicio) | Peso della gru (in servizio) | Peso da grua (em serviço) | Вес крана (при работе) |
| | Réaction horizontale | Horizontalkräfte | Horizontal reaction | Reaccion horizontal | Reazione orizzontale | Reacção horizontal | Горизонтальные реакции |
| | Camion 13,4 m | Lkw 13,4 m | Lorry 13,4 m | Camión 13,4 m | Camion 13,4 m | Camião 13,4 m | Ррузовой автомобиль 13,4 м |
| | Conteneur High Cube 40', et/ou Flat Rack 20' | Container High Cube 40', und/oder Flat Rack 20' | Container High Cube 40', and/or Flat Rack 20' | Contenedor High Cube 40', y/o Flat Rack 20' | Contentor High Cube 40', e/ou Flat Rack 20' | Contentor High Cube 40', e/ou Flat Rack 20' | 40-футовый контейнер повышенной вместимости High Cube, и/или 20-футовая открытая платформа Flat Rack |
| | Cadre d'ancrage serré | Fester Verankerungsrahmen | Tightened anchorage frame | Marco de anclaje de apriete | Quadro di ancoraggio stretto | Quadro de amarração apertado | Прикрепленная анкерная рама |
| | Cadre d'ancrage desserré | Looser Verankerungsrahmen | Loosened anchorage frame | Marco de anclaje de desapriete | Quadro di ancoraggio allentato | Quadro de amarração solto | Отсоединенная анкерная рама |
| | Levage | Heben | Hoisting | Elevación | Sollevamento | Elevação | Подъем |
| | Distribution | Katzfahren | Trolleying | Distribución | Distribuzione | Distribuição | Перемещение по стреле |
| | Orientation | Schwenken | Slewing | Orientación | Rotazione | Rotação | Поворот |
| | Translation | Kranfahren | Travelling | Traslación | Traslazione | Translação | Перемещение крана |
| | Puissance requise | Erforderliche Leistung | Required power | Potencia Necesaria | Potenza richiesta | Potência Necessária | Потребляемая мощность |
| | Fonction Power Control : vitesses levage «montée» adaptées à la puissance disponible | Funktion Power Control : An die verfügbare Leistung angepasste Hubgeschwindigkeiten „Heben“ | Power Control function: „Hoisting“ speeds adapted to the available power | Función Power control (control de la potencia): velocidades de elevación „arriba“ adaptada a la energía disponible | Funzione Power Control : velocità del sollevamento «salita» adattate alla potenza elettrica disponibile | Função Power control (controlo de potência): velocidades de elevação "subir" adaptada a energia disponível | Функция Power control: изменение скорости подъема в зависимости от мощности источника питания |
| | Voir télescopage sur dalles | Siehe Kletterkrane im Gebäude | See climbing crane | Vea grua trepadora | Consultare gru in cavedio | Ver telescopagem sobre lages | См. кран, ползущий внутри здания |
| | Nous consulter | Auf Anfrage | Consult us | Consultarnos | Consultateci | Consultar-nos | Проконсультируйтесь у нас. |
| | Document commercial non contractuel. Pour toute information technique se référer à la notice correspondante. | Unverbindliches Vertriebsdokument. Für technische Informationen, siehe die entsprechenden Anweisungen. | This commercial document is not legally binding. For any technical information, please refer to the corresponding instructions. | Documento comercial no contractual. Para cualquier información técnica, ver la noticia correspondiente. | Documento commerciale non vincolante, per tutte le informazioni tecniche fare riferimento al catalogo istruzioni. | Documento comercial não contratual. Para qualquer informação técnica complementar consultar as respectivas instruções. | Этот коммерческий документ не является юридически обязательным. Для получения технической информации, см. соответствующие инструкции. |



Grove Maniowoc National Crane Potain

Americas
Manitowoc, Wisconsin, USA
 Tel: +1 920 684 6621
 Fax: +1 920 683 6277

Shady Grove, Pennsylvania, USA
 Tel: +1 717 597 8121
 Fax: +1 717 597 4062

Europe, Middle East, Africa
Dardilly, France
 Tel: +33 (0)4 72 18 20 20
 Fax: +33 (0)4 72 18 20 00

China
Shanghai, China
 Tel: +86 21 6457 0066
 Fax: +86 21 6457 4955

Greater Asia-Pacific
Singapore
 Tel: +65 6264 1188
 Fax: +65 6862 4040

www.manitowoccranes.com