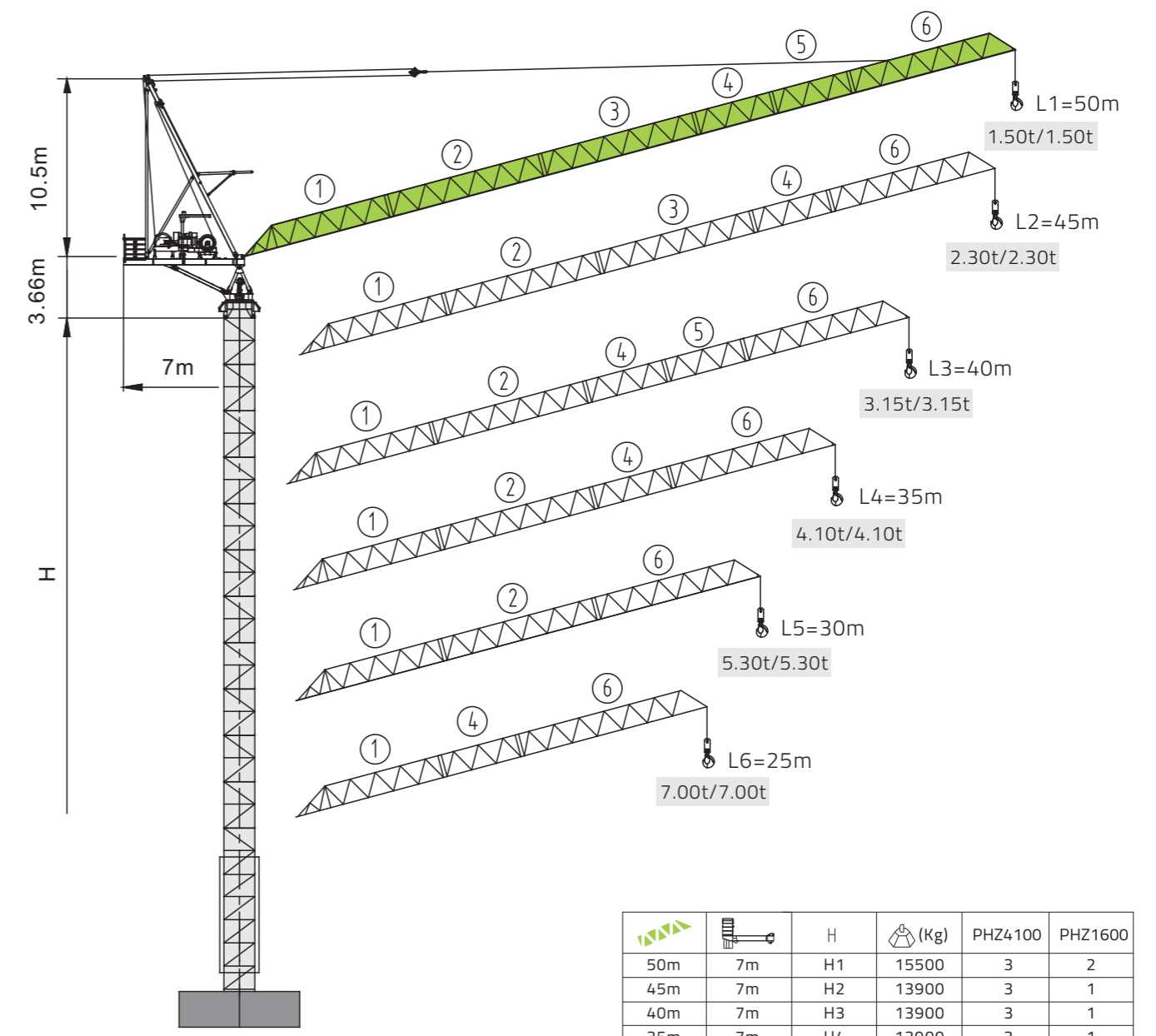


■ Minimum radius out of service  
 ⊗ Hinge point at jib root

Mechanisms			bd			bd			bd			Spool	kW	
			III	IV	V	III	IV	V	III	IV	V			
Hoisting	8t	H37FP20-610P	m/min	35	50	100	23	33	66	17.5	25	50	610m∅ (6 layers)	37
		t	4	4	2	6	6	3	8	8	4			
	H45FL20-810-b (Optional)	m/min	52	104	130	35	69	87	26	52	65	810m∅ (6 layers)	45	
		t	4	2	1	6	3	1.5	8	4	2			
10t	H37FP25-540P	m/min	28	40	80	18.7	26.7	53.3	14	20	40	540m∅ (6 layers)	37	
	t	5	5	2.5	7.5	7.5	3.75	10	10	5				
H45FL25-1010D (Optional)	m/min	44	88	110	29	59	73	22	44	55	1010m∅ (7 layers)	45		
	t	5	2.5	1.25	7.5	3.75	1.88	10	5	2.5				
Luffing	L30FP35	min	3.0(15°~85°)									30		
	L37FL35-b (Optional)	min	2.2(15°~85°)										37	
Slewing	HPW55F1.130B HPW55F2.130B	r/min	0~0.79									2X5.5		
⚡	8t	380V(±10%) 50Hz	78 kW											
	10t	380V(±10%) 50Hz	78 kW											

# L125

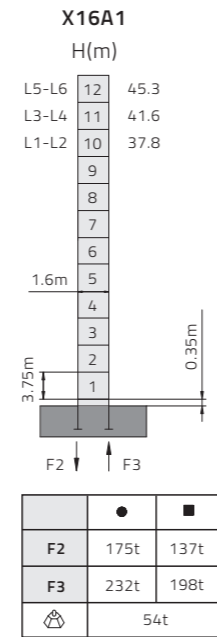
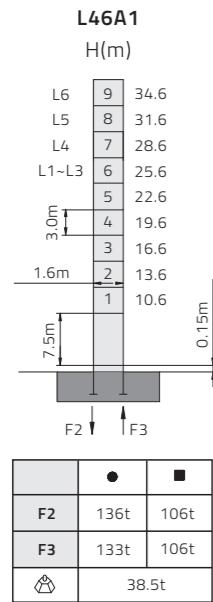
## 8t/10t



Jib Length	Jib Width	H	(Kg)	PHZ4100	PHZ1600
50m	7m	H1	15500	3	2
45m	7m	H2	13900	3	1
40m	7m	H3	13900	3	1
35m	7m	H4	13900	3	1
30m	7m	H5	12300	3	0
25m	7m	H6	12300	3	0



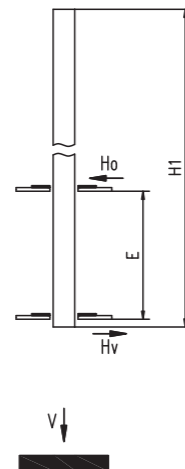
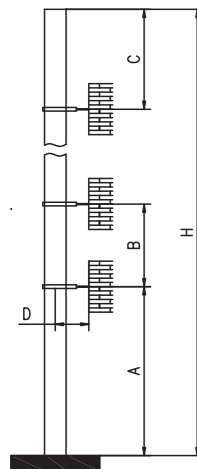
Mast & reactions



- Reactions in service
- Reactions out of service

⚖ Weight with max free-standing height, max jib (without counter-weight and load)

Anchorage & internal climbing



Overall dimensions of the internal climbing frame

Dimensions of the internal climbing opening

- Reactions in service
- Reactions out of service

Mast	Jib(m)	A (m)	B (m)	C (m)	D (m)	H (m)
L46A1	50~40	12~18	6~12	≤ 16.5	4.5	≤ 200
X16A1	50~45	28.5	26.3	35.6	4.5	≤ 100
	50~45	28.5	22.5	31.9	4.5	≤ 200

Mast	Jib(m)	H1 (m)	E (m)	V (t)	Ho(t)		Hv(t)		J (m)	k (m)	X (m)	Y (m)
					●	■	●	■				
L46A1	50~40	24.0	7~11	71	41.4	39.6	26.8	29.5	2.78	2.38	3.00	2.50
X16A1	50~45	37.5	12~16	85.3	26.9	50.4	18.5	33.7	2.59	2.30	2.70	2.50

Load diagram

8t

R(m)		Max capacity (m/t)	20	25	30	35	40	45	50
50	bd	4.94~22.16/8.00	8.00	6.74	4.96	3.69	2.74	2.01	1.42
	bd	4.94~26.90/6.00	6.00	6.00	5.03	3.75	2.80	2.06	1.46
	bd	4.94~34.14/4.00	4.00	4.00	4.00	3.81	2.86	2.11	1.50
45	bd	4.49~22.49/8.00	8.00	6.91	5.15	3.90	2.95	2.22	
	bd	4.49~27.27/6.00	6.00	6.00	5.22	3.95	3.00	2.26	
40	bd	4.04~22.79/8.00	8.00	6.98	5.28	4.02	3.08		
	bd	4.04~27.61/6.00	6.00	6.00	5.32	4.06	3.11		
35	bd	3.59~22.51/8.00	8.00	6.98	5.28	4.06			
	bd	3.59~27.68/6.00	6.00	6.00	5.32	4.10			
30	bd	3.14~22.49/8.00	8.00	6.97	5.31				
	bd	3.14~27.85/6.00	6.00	6.00	5.35				
25	bd	2.69~22.59/8.00	8.00	7.00					
	bd	2.69~25.00/6.00	6.00	6.00					
	bd	2.69~25.00/4.00	4.00	4.00					

10t

R(m)		Max capacity (m/t)	20	25	30	35	40	45	50
50	bd	4.94~18.87/10.00	9.33	6.70	4.91	3.65	2.70	1.97	1.39
	bd	4.94~23.37/7.50	7.50	6.95	5.18	3.93	2.98	2.04	1.45
	bd	4.94~30.27/5.00	5.00	5.00	5.00	3.81	2.85	2.10	1.50
45	bd	4.04~19.24/10.00	9.50	6.87	5.11	3.86	2.92	2.20	
	bd	4.49~23.55/7.50	7.50	6.95	5.18	3.93	2.98	2.25	
40	bd	4.04~19.39/10.00	9.59	6.97	5.23	3.98	3.06		
	bd	4.04~23.97/7.50	7.50	7.05	5.30	4.04	3.10		
35	bd	3.59~18.91/10.00	9.41	6.88	5.27	4.00			
	bd	3.59~23.71/7.50	7.50	6.96	5.24	4.05			
30	bd	3.14~19.12/10.00	9.44	6.96	5.30				
	bd	3.14~23.78/7.50	7.50	7.02	5.35				
25	bd	2.69~18.92/10.00	9.37	6.95					
	bd	2.69~23.77/7.50	7.50	7.00					
	bd	2.69~25.00/5.00	5.00	5.00					