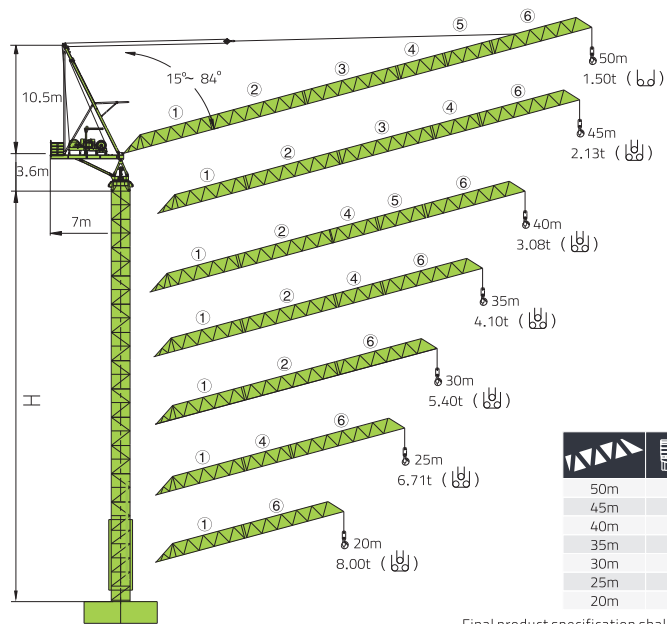


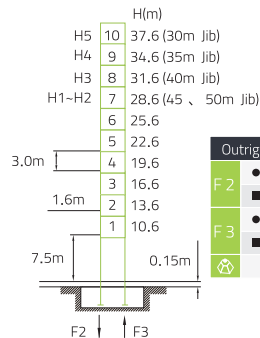
L100-8



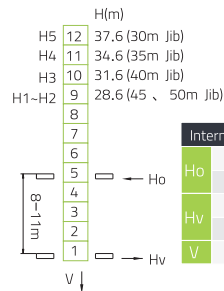
		H	(kg)	PHZ3300	PHZ3600
50m	7m	H1	13500	3	1
45m	7m	H2	13500	3	1
40m	7m	H3	13500	3	1
35m	7m	H4	13500	3	1
30m	7m	H5	13500	2	1
25m	7m	H6	10200	2	1
20m	7m	H7	10200	2	1

Final product specification shall be in accordance with purchase order or sales contract only

塔身 Masts / 反力 Reactions / L100-8F



支腿固定式 Outrigger



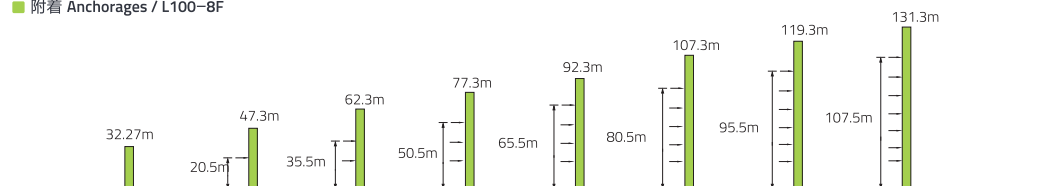
内爬式 Internal climbing

Outrigger	
F 2	● 137t
	■ 165t
F 3	● 105t
	■ 134t
	41t

Internal climbing	
Ho	● 41.4t
	■ 39.6t
Hv	● 26.8t
	■ 29.5t
V	73.2t

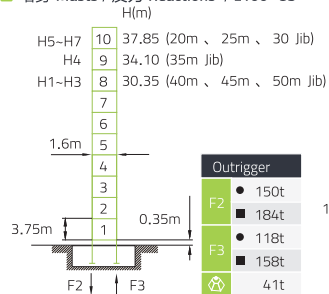
- 工作状态反力
Reactions in service
- 非工作状态反力
Reactions out of service
- ⊗ 独立高度、最大起重臂的自重 (不含平衡重、吊重)
Weight with max free-standing height, max jib (without counter-weight and load)

附着 Anchorages / L100-8F

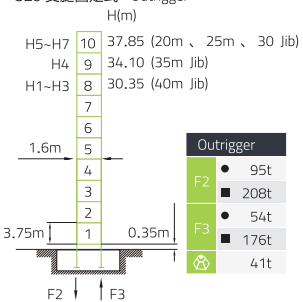


L100-8

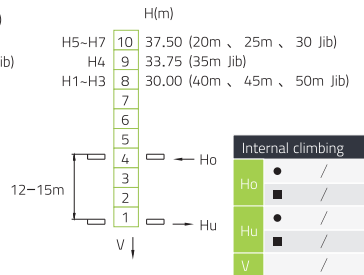
塔身 Masts / 反力 Reactions / L100-8S



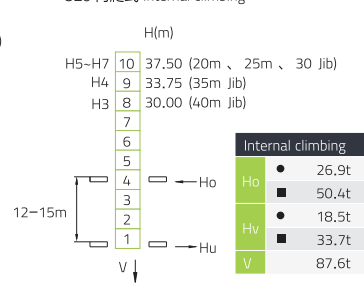
C25 支腿固定式 Outrigger



D25 支腿固定式 Outrigger



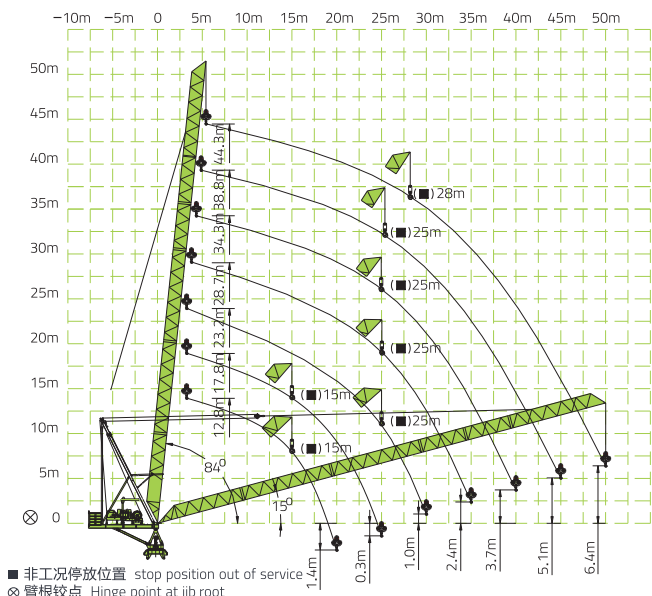
C25 内爬式 Internal climbing



D25 内爬式 Internal climbing

- 工作状态反力 Reactions in service
- 非工作状态反力 Reactions out of service
- ⊗ 独立高度、最大起重臂的自重 (不含平衡重、吊重) Weight with max free-standing height, max jib (without counter-weight and load)

起重臂 Luffing Jib









- 非工况停放位置 stop position out of service
- ⊗ 臂根铰点 Hinge point at jib root

L100-8

起重特性 Load Diagram

B(m)	Max Capacity m/t	20.0	22.5	25.0	27.5	30.0	32.5	35.0	37.5	40.0	42.5	45.0	47.5	50.0
		50	5.1~25.6/6.00	6.00			5.37	4.63	4.00	3.49	3.04	2.64	2.30	2.00
	5.1~32.5/4.00	4.00												
45	4.6~21.4/8.00	8.00	7.47	6.34	5.48	4.71	4.12	3.58	3.13	2.74	2.41	2.13		
	4.6~25.9/6.00	6.00			5.48	4.71	4.12	3.58	3.13	2.74	2.41	2.13		
	4.6~32.9/4.00	4.00												
40	4.1~21.8/8.00	8.00	7.68	6.58	5.71	4.96	4.37	3.85	3.42	3.08				
	4.1~26.6/6.00	6.00			5.71	4.96	4.37	3.85	3.42	3.08				
	4.1~34.2/4.00	4.00												
35	3.6~21.8/8.00	8.00	7.71	6.65	5.84	5.13	4.56	4.10						
	3.6~26.9/6.00	6.00			5.84	5.13	4.56	4.10						
	3.6~35.0/4.00	4.00												
30	3.1~21.9/8.00	8.00	7.72	6.70	5.94	5.40								
	3.1~27.2/6.00	6.00			5.94	5.40								
	3.1~30.0/4.00	4.00												
25	2.8~22.1/8.00	8.00	7.80	6.71										
	2.8~25.0/6.00	6.00												
	2.8~25.0/4.00	4.00												
20	2.8~20.0/8.00	8.00												
	2.8~20.0/6.00	6.00												
	2.8~30.0/4.00	4.00												

传动机构 Mechanisms

配置 configuration		b d			b d			b d			KW		
		III	IV	V	III	IV	V	III	IV	V			
 起升 Hoisting	H45FL20-810	m/min	52	104	130	34.6	69.3	86.6	26	52	65	45	810m ① (6 layers)
		t	4	2	1	6	3	1.5	8	4	2		
 回转 Slewing	QP8100D2(CE)	m/min	30	50	100	20	33.3	66.7	15	25	50	2x 5.5	① 超出咨 询我们 Consultus if overtop
		t	4	2	1	6	3	1.5	8	4	2		
 回转 Slewing	HPW55F1.130B HPW55F2.130B	r/min	0~0.7									2x 5.5	
 变幅 Luffing	L37FL35	min	1.51 (15°~84°)									37	
	BP250		2.2 (15°~84°)									25	
	380V(±10%)50Hz	H45FL20-810 → 93kW											
		QP8100D2(CE) → 73kW											